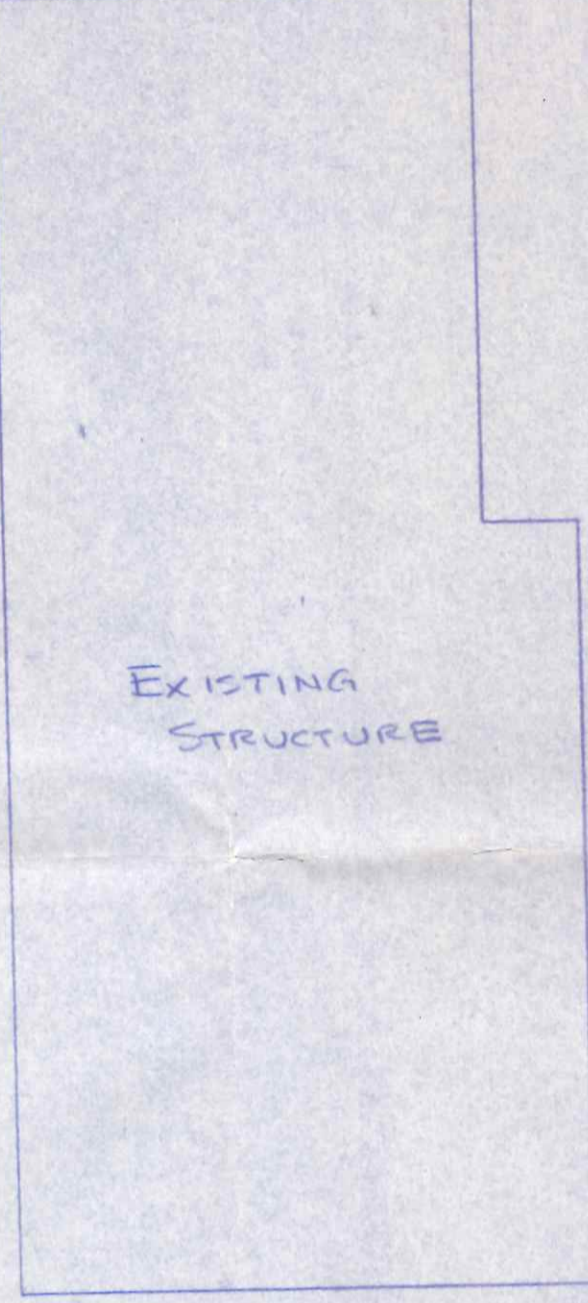


E ALLEY 135' APPROX

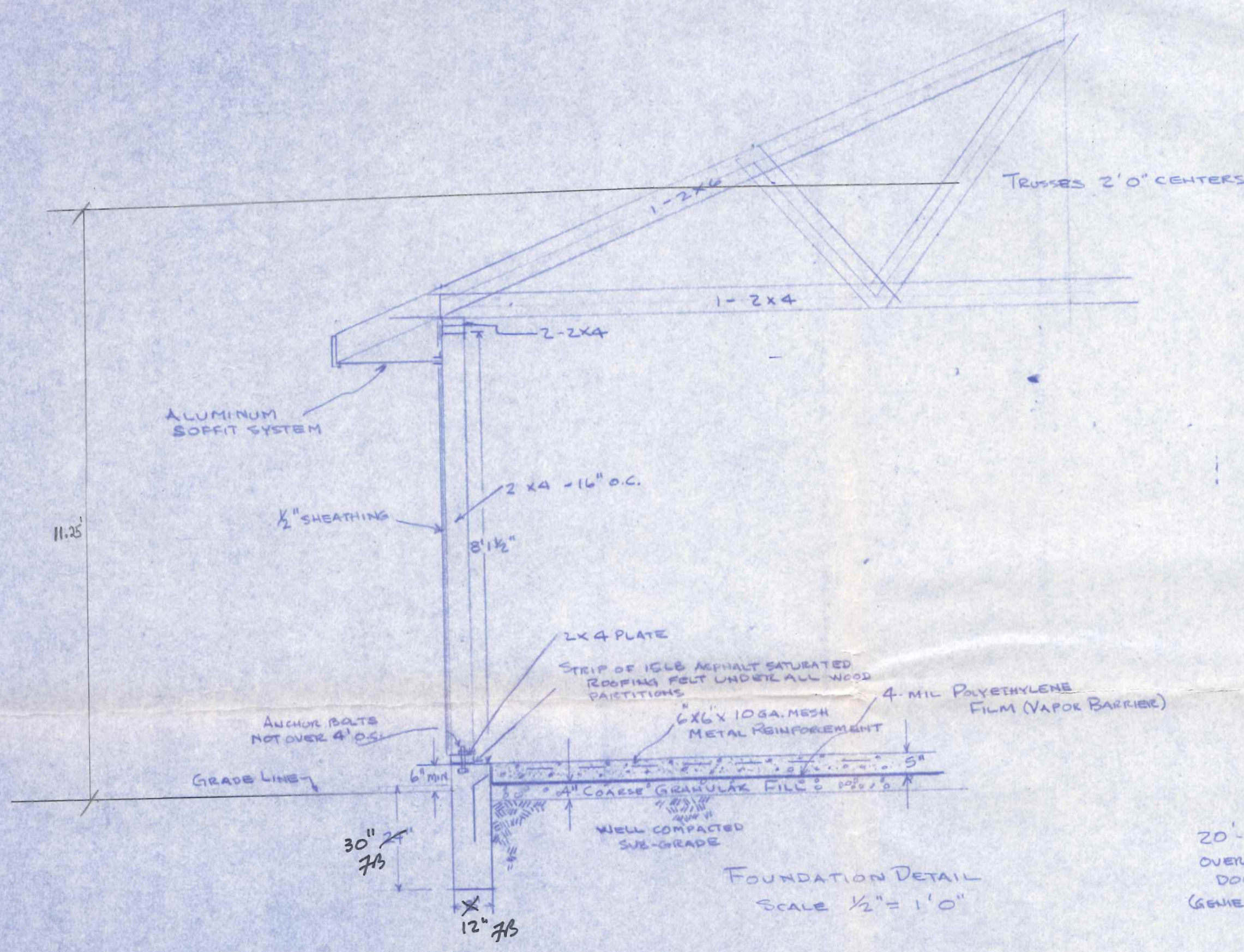


12'6"

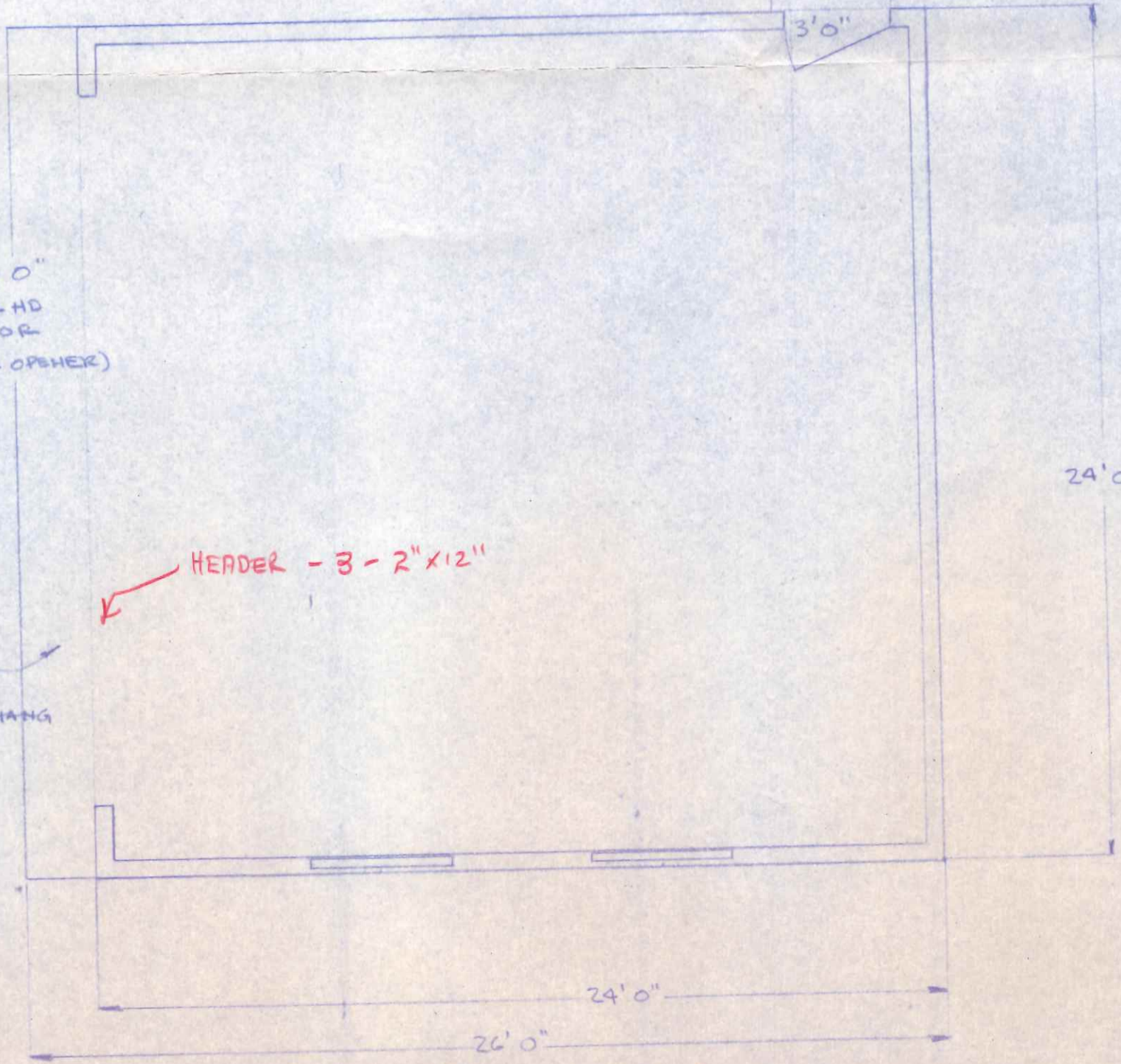
99.3'

135' APPROX

HALEY AVENUE



FOUNDATION DETAIL SCALE 1/2" = 1'0"



FLOOR PLAN - SCALE 1/4" = 1'0"

Plot Plan SCALE 1/8" = 1'0"

NEW GARAGE FOR F. A. BROWN 411 HALEY AVE. NAPOLEON, OHIO

CITY OF NAPOLEON BUILDING DEPT. Plan Approval By [Signature] Date 10-11-77 WITH ADDENDUM

411 Haley

Table with columns for revision (REV), date (DATE), and other project details.

CLEVITE CORPORATION HARRIS DIVISION NAPOLEON, OHIO

Table with columns for drawing information: DR, STD, TOL, HEAT TREAT, REQ, MATL, SIZE, CH, FRAC, S, I, 64, SCALE, DATE, DESIGN NO, NAME, PART NO.